

2MP ColourHunter HD Fixed Turret Analog Camera

NEU-AD122-28-CA



Introduction

2MP ColourHunter HD Fixed Turret Analog Camera with a high-performance 1/3-inch CMOS sensor. It supports TVI/AHD/CVI/CVBS which effectively enhances product adaptability and diversity of networking solutions. With SYV-75-3 or other coaxial cable types the camera can achieve low-cost, long-distance, anti-interference, and low delay mega-pixel HD video transmission. The camera supports 24/7 full-color imaging.

Features

- 2MP high quality image
- TVI/AHD/CVI/CVBS
- Supports white light illumination, 24/7 full-color imaging
- Supports 180° horizontal flip, 180° vertical flip
- OSD configuration menu, easy to operate
- IP67 waterproof and dustproof design, high reliability
- OSD configuration menu in 11 languages
- 3-Axis

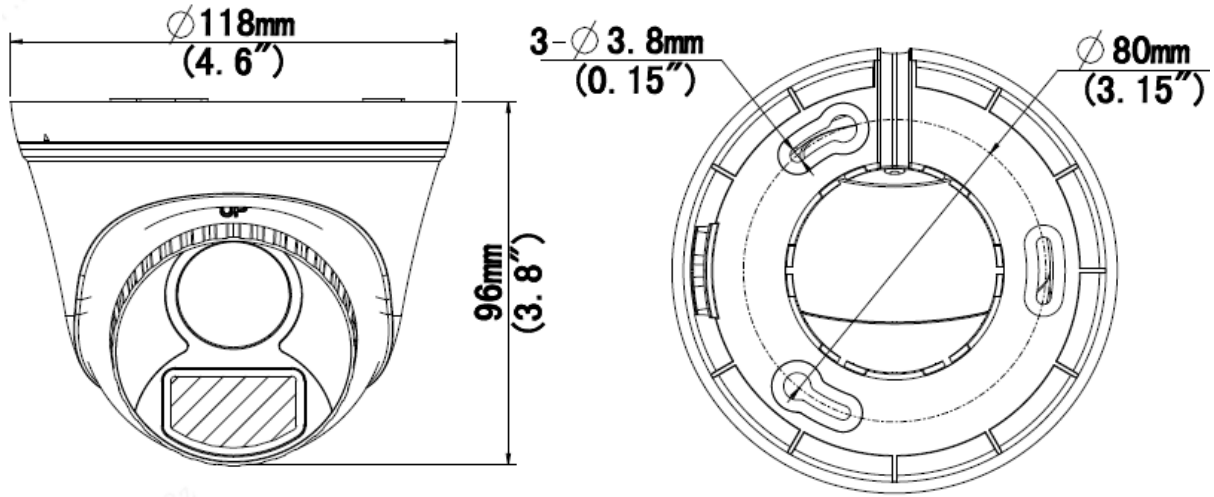
Specifications

Model	NEU-AD122-28-CA	
Sensor		
Pixel	2MP	
Size	1/3"	
Minimum illumination	0.01lux (F1.6, AGC ON) 0 lux (white light on)	
Lens		
Lens	2.8mm	
Lens mount	M12	
Angle of view	H: 100.9° V: 56.5° D: 121.8°	
Illuminator		
Illuminator	One white-light illuminator	
Illumination distance	20m	
Lifetime	≥60,000 hours	
Video		
Resolution	1080P: 1920(H)×1080(V) 720P: 1280(H) ×720(V)	
Frame rate	TVI/AHD/CVI: 1080P@30fps, 1080P@25fps; 720P@30fps, 720P@25fps CVBS: PAL, NTSC	
Shutter time	PAL: 1/25s-1/50000s NTSC: 1/30s-1/50000s	
Image		
Exposure mode	4 modes: Global (default), BLC, HLC, DWDR	
Day/Night	24/7 full-color imaging	
Digital noise reduction	2D/3D	
White balance	Two modes: Auto (default), Manual	
WDR	DWDR	
Flip	Supports 180° horizontal flip, 180° vertical flip	
Interface		
Power	5.5mm power interface	
Video output	BNC, supports TVI/AHD/CVI/CVBS	
Operating environment		
Temperature	-30℃ to 60℃ (-22℉ to 140℉)	
Humidity	≤95% (RH, non-condensing)	
Surge protection	4KV	
Ingress protection	IP67	
General		
Power	DC 12V(±25%), with reverse polarity protection and surge protection, Max 2.4W	
Mount	Surface mount (default), optional backbox, wall mount bracket	
Dimensions	Φ118mm*96mm (diameter*height)	
Material	Plastic	
Weight	205g(0.452lb)	

Certification

CB, CE, FCC

Dimensions



NEU-AD122-28-CA

Accessories

TR-JB03-I-IN

Junction Box



TR-UP06-IN

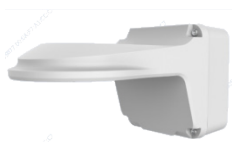
Pole Mount



PWR-DC1201A-UK

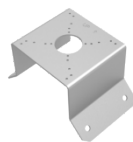
TR-JB07/WM03-G-IN

Wall Mount



TR-UC08-C

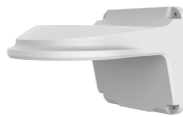
Corner mount



PWR-DC1201A-US

TR-WM03-D-IN

Wall Mount



TR-SE24-A-IN

Pendant Mount



PWR-DC1201A-EU

TR-WM07P-B

Wall mount



TR-CM24-IN

Pendant Mount



TR-A01-IN

Waterproof Joint



TR-SE24-IN

Pendant Mount



Wall Plug-in UK
Power Adapter



Wall Plug-in US Power
Adapter

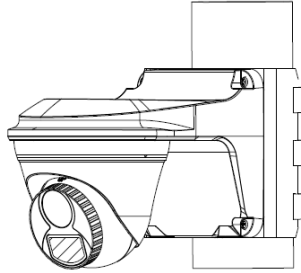


Wall Plug-in EU
Power Adapter

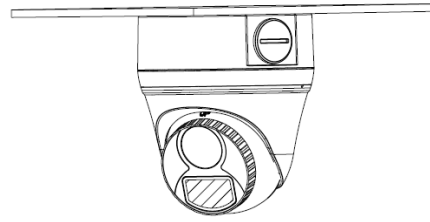


Mount

TR-JB07/WM03-G-IN(TR-WM03-D-IN)+TR-UP06-IN

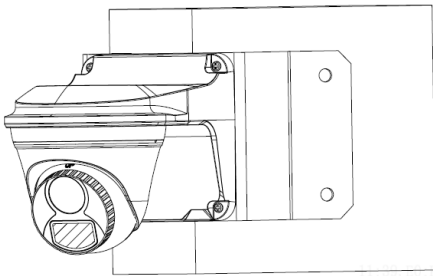


TR-JB03-I-IN

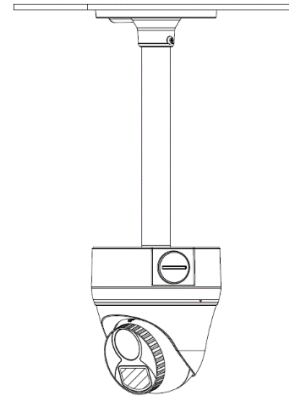


11:33, 10:11

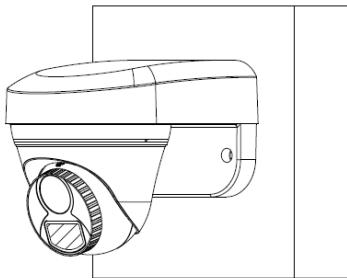
TR-JB07/WM03-G-IN(TR-WM03-D-IN)+TR-UC08-C



TR-CM24-IN+TR-JB03-I-IN



TR-WM07P-B



TR-JB07/WM03-G-IN(TR-WM03-D-IN)

